



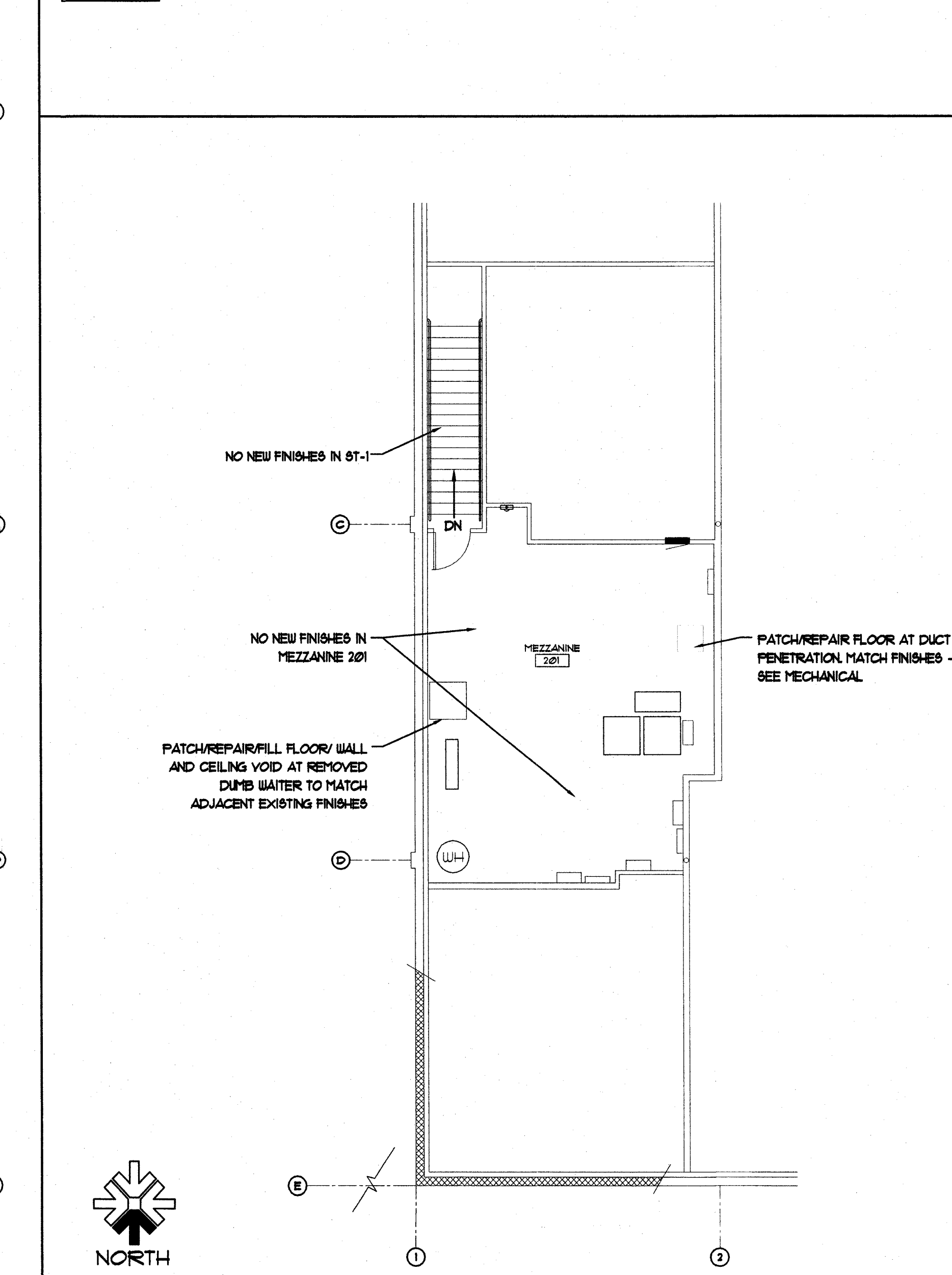
A1 FIRST FLOOR PLAN

SCALE: 1/8" = 1'-0"

- ### FINISH FLOOR PLAN NOTES
- SEE SHEET A101 FOR SYMBOLS & ABBREVIATIONS.
 - ALL CHANGES OF FLOORING MATERIAL ARE TO TAKE PLACE AT THE CENTERLINE OF DOORS UNLESS NOTED OTHERWISE.
 - FLOOR FINISHES ARE CONTINUOUS IN THE ENTIRE AREA IN WHICH THEY ARE DESIGNATED, UNDER EQUIPMENT, MOVEABLE CASEWORK, AND INTO TOE KICK SPACES.
 - PROVIDE TRANSITION STRIPS AT ALL INTERSECTIONS OF DISSIMILAR MATERIALS.
 - CONTRACTOR SHALL PERFORM REQUIRED FLOOR PREPARATION, APPLY FLOOR LEVELING COMPOUND AND APPLY FLOOR SEALER AS NEEDED FOR SPECIFIED FLOOR FINISHES. - SEE 03 54 00.
 - SEE FINISH SCHEDULE AND INTERIOR ELEVATION SHEETS FOR FURTHER FINISH INFORMATION.
 - SEE BID ALTERNATE #3 FOR VINYL COMPOSITION TILE IN-LIEU OF BASE BID RUBBER FLOOR TILE. REFERENCE SPEC 03 60 16

LEGEND

CPT-1 GLUE-DOWN 6' ROLL SPEC 03 60 16	SV-1 SHEET VINYL SPEC 03 65 13
CPT-2 WALK-OFF MAT SPEC 03 60 13	FFS PAINT FLOOR SEALER SPEC 03 30 00/03 31 00
RT-1 RESILIENT TILE FLOORING SPEC 03 60 16	TILE-1 FLOOR TILE SPEC 03 30 00
RT-2 RESILIENT TILE FLOORING SPEC 03 60 16	VCT TILE-1
RT-3 RESILIENT TILE FLOORING SPEC 03 60 16	CG



A8 SECOND FLOOR PLAN

SCALE: 1/8" = 1'-0"

DESIGN WEST
ARCHITECTS, P.A.
7513 W. KENNEWICK AVENUE
KENNEWICK, WA 98336
PH: (509) 785-2244 FAX: (509) 785-8740
DESIGN CONCEPTS AND DRAWINGS NOT TO BE REPRODUCED WITHOUT WRITTEN PERMISSION OF ARCHITECT

KENNEWICK SCHOOL DISTRICT
1315 BUILDING RENOVATIONS
1315 WEST 4TH AVENUE
KENNEWICK, WA 98336

REVISIONS

DRAWN BY:
KC

CHECKED BY:
BW

DATE
01/10/2013

JOB NUMBER
1278

SHEET NAME
FLOOR FINISH PLAN

SHEET
A3.41