


## A1 HVAC PLAN

SCALE: 1/8" = 1'-0"



**NORTH**

## A8 SECOND FLOOR HVAC PLAN

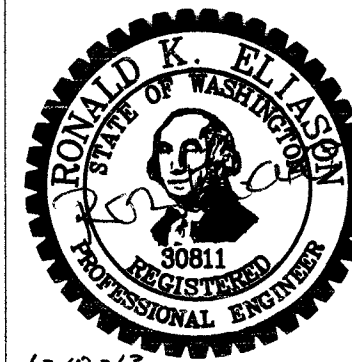
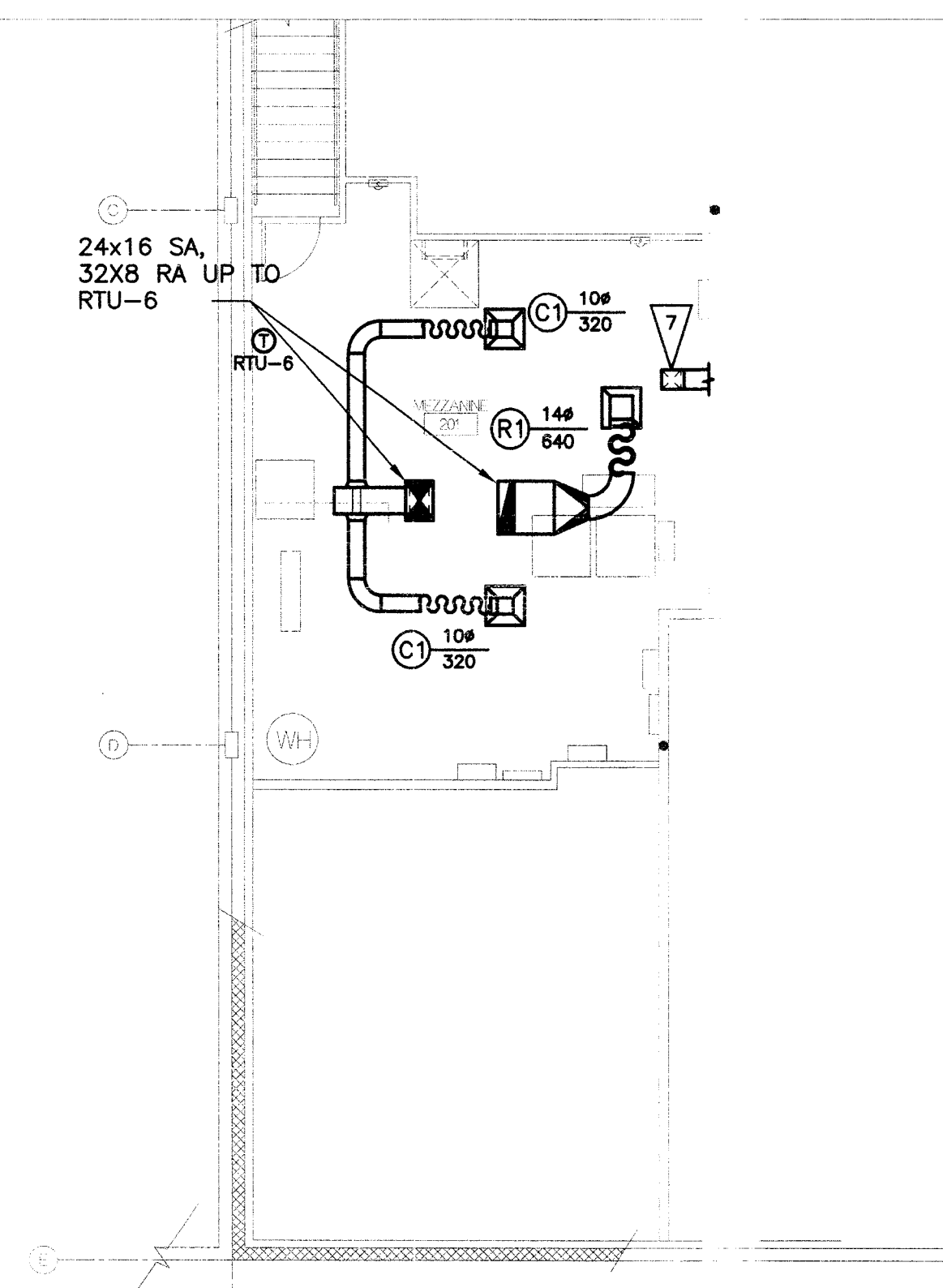
SCALE: 1/8" = 1'-0"

**SHEET NOTES:**

1. FIELD VERIFY EXISTING CONDITIONS PRIOR TO CONSTRUCTION.
2. REFER TO ARCHITECTURAL REFLECTED CEILING PLAN AND INTERIOR ELEVATIONS FOR FINAL LOCATION OF ALL GRILLES AND DIFFUSERS. WHERE DISCREPANCIES ARISE, LOCATE PER ARCHITECTURAL PLANS AND PROVIDE ADDITIONAL DUCTWORK AND FITTINGS AS REQUIRED TO MAKE FINAL CONNECTION.
3. PROVIDE A MANUAL VOLUME DAMPER FOR EACH SUPPLY, RETURN, AND EXHAUST OPENING, LOCATED AS FAR UPSTREAM AS POSSIBLE FROM THE OPENING. THESE VOLUME DAMPERS ARE NOT SHOWN ON THE PLANS BUT SHALL BE PROVIDED. PROVIDE A MANUAL VOLUME DAMPER FOR BRANCH MAINS SERVING MORE THAN ONE OPENING AS INDICATED ON THE DRAWINGS.
4. PROVIDE 1" THICK ACOUSTICAL SOUND LINING ON ALL RECTANGULAR DUCTWORK. DUCT SIZES ARE NET SIZE.

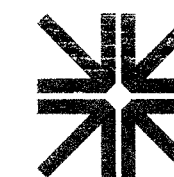
**FLAG NOTES:**

- 1 PROVIDE TRANSITION FROM ROUND TO SQUARE, SIZED TO MATCH EXHAUST FAN INLET SIZE.
- 2 PROVIDE ALUMINUM DUCT BRANCHES FROM GRILLE BACK TO DUCT MAIN FOR SHOWER ROOMS. SLOPE DUCTWORK BACK TO GRILLE.
- 3 CEILING DIFFUSER. INSTALL PER 1/M9.03. (TYP)
- 4 CEILING GRILLE. INSTALL PER 1/M9.03. (TYP)
- 5 PROVIDE INLINE LINT TRAP IN WALL. PROVIDE ACCESS PANEL IN WALL FOR LINT TRAP ACCESS. PROVIDE INLINE BOOSTER FAN (DEF=1) ABOVE CEILING FOR DRYER VENT.
- 6 6"Ø DUCT DOWN TO RANGE HOOD AND UP THROUGH ROOF. TRANSITION SIZE TO MAKE CONNECTION.
- 7 ROUTE DUCT WORK THROUGH WALL TO MEZZANINE AND PENETRATE MEZZANINE FLOOR TO CONNECT TO GRILLE.
- 8 EXISTING DIFFUSER/GRILLE TO FLOW AS NOTED.



**DESIGN WEST**  
ARCHITECTS, P.A.  
7513 W KENNEWICK AVE SUITED  
KENNEWICK, WA 98336  
PH. (509) 783-2244 FAX (509) 783-8740

© COPYRIGHT DESIGN WEST ARCHITECTS P.A.  
DESIGN CONCEPTS AND DRAWINGS NOT TO BE REUSED



**HARGIS**  
Hargis Engineers, Inc.  
600 Stewart Street, Suite 1000 | Seattle, WA 98101  
t | 206.448.3376 f | 206.448.4450 w | hargis.biz

**KENNEWICK SCHOOL DISTRICT**  
**1315 BUILDING RENOVATIONS**  
1315 WEST 4TH AVENUE  
KENNEWICK, WA.  
99536

## REVISIONS

DRAWN BY:  
MR

CHECKED BY:  
JR

JOB NUMBER  
1278

SHEET NAME

## HVAC PLAN

SHEET

## M4.01