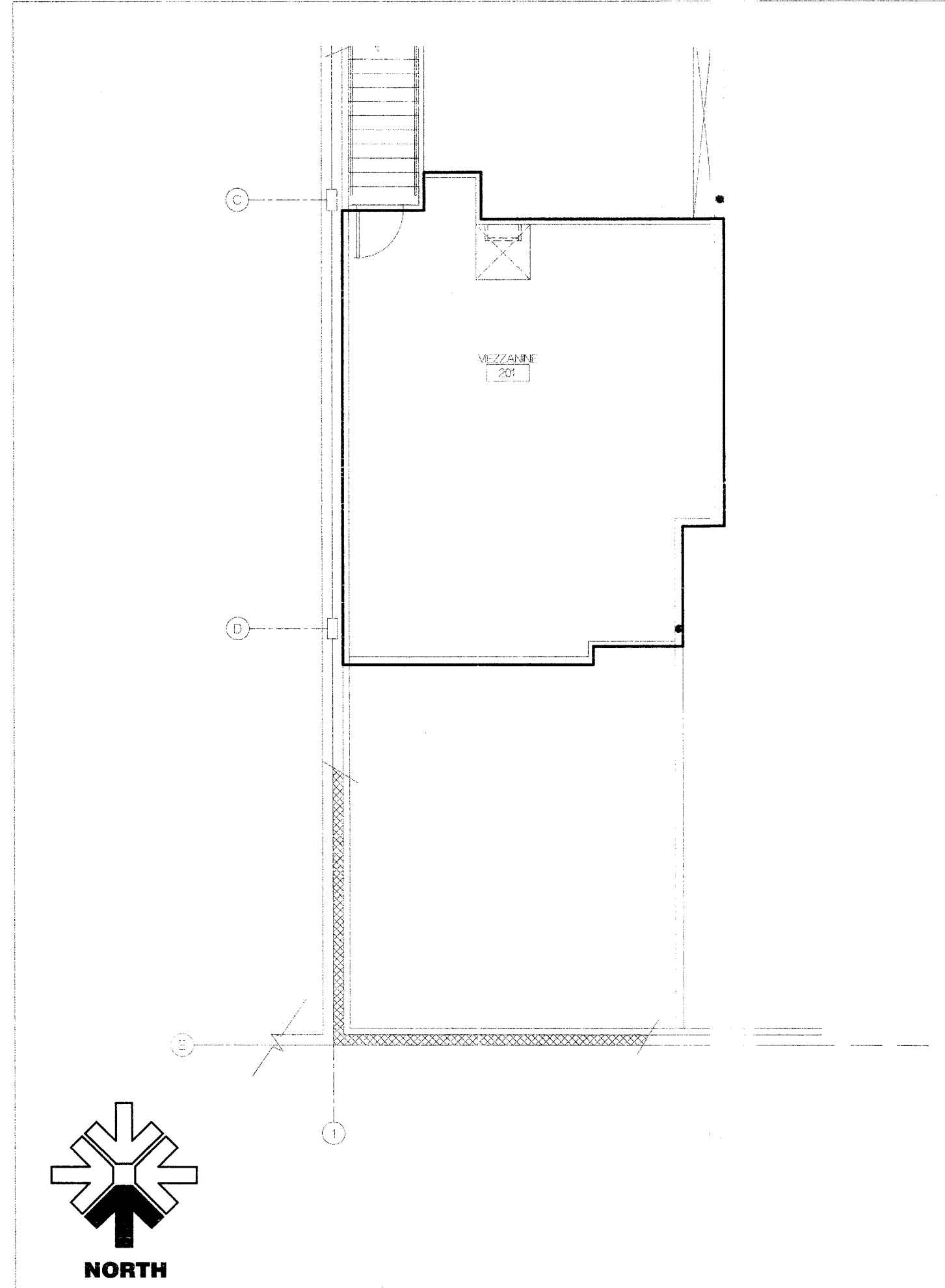


**A1** FIRST FLOOR FIRE SUPPRESSION PLAN

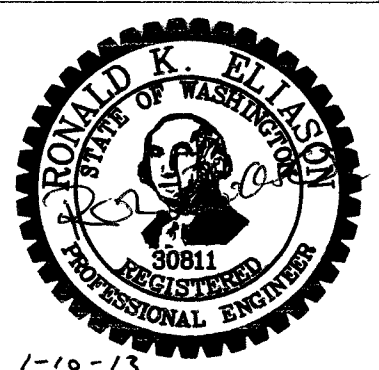
SCALE 1/8" = 1'-0"

- ### FIRE PROTECTION NOTES
- SCOPE OF WORKS INCLUDES:
    - DEMOLITION OF EXISTING SPRINKLERS AND BRANCH PIPING AS REQUIRED TO ACCOMMODATE MECHANICAL SYSTEMS.
    - FURNISH AND INSTALL NEW SPRINKLER HEADS AND NEW BRANCH PIPING FOR ASSOCIATED SPRINKLER HEADS IN COORDINATION WITH NEW FLOOR PLAN. IT IS THE CONTRACTOR'S RESPONSIBILITY TO FIELD VERIFY EXISTING CONDITIONS, POINTS OF CONNECTION AND FULL EXTENT OF NEW FIRE SPRINKLER WORK.
  - PROVIDE ALL MATERIALS, EQUIPMENT, AND PERMITS AND FURNISH ALL LABOR REQUIRED TO INSTALL COMPLETE AND OPERABLE FIRE PROTECTION SYSTEMS AS INDICATED ON THE DRAWINGS, AS SPECIFIED AND COMPLYING WITH THE STANDARDS OF THE NATIONAL FIRE PROTECTION ASSOCIATION AND ALL STATE AND LOCAL REGULATIONS.
  - BUILDING SHALL BE PROVIDED THROUGHOUT WITH A SPRINKLER SYSTEM WHICH IS HYDRAULICALLY CALCULATED. HEAD SPACING, IN GENERAL, AND WATER QUANTITY SHALL BE AS INDICATED.
  - PROVIDE AN AUTOMATIC WET PIPE SPRINKLER SYSTEM THROUGHOUT, COMPLETE IN ALL RESPECTS AND READY FOR OPERATION INCLUDING ALL TEST AND DRAIN LINES, PRESSURE GAUGES, HANGERS, AND SUPPORTS, SIGNS, AND OTHER STANDARD APPURTENANCES.
  - IT SHALL BE THE RESPONSIBILITY OF THE INSTALLING CONTRACTOR TO ENSURE APPROPRIATE MEASURES ARE TAKEN TO PREVENT FREEZING OF THE SPRINKLER SYSTEM. CONTRACTOR SHALL WARRANT AGAINST FREEZING FOR A PERIOD OF NO LESS THAN ONE YEAR AFTER PROJECT COMPLETION.
  - REFER TO MECHANICAL SPECIFICATIONS FOR DESIGN GUIDELINES. THIS DRAWING IS A GENERAL REPRESENTATION OF ROUTING AND INTENDED COVERAGE TYPES.
  - LOCATE ALL DRAIN LOCATIONS AT EXTERIOR WALLS OR LOCATIONS WITHIN THE INTERIOR NEAR CUSTODIAL ROOMS. PROVIDE ADDITIONAL DRAINS AS REQUIRED FOR FULL DRAINAGE OF SPRINKLERS. ALL MAIN & AUXILIARY DRAIN LOCATIONS SHALL BE APPROVED BY THE ARCHITECT/ENGINEER PRIOR TO INSTALLATION. MOVE DRAINS AT NO ADDITIONAL COST AS REQUESTED.
  - ALL FIRE SPRINKLER PIPING SHALL BE ROUTED CONCEALED UNLESS NOTED OTHERWISE ON PLANS. NOTE AVAILABLE SPACE FOR PIPE ROUTING IS VERY LIMITED THROUGHOUT. CONTRACTOR SHALL COORDINATE WITH DUCTWORK, EQUIPMENT, LIGHTING, PIPING, ETC. TO ALLOW FOR ADEQUATE INSTALLATION FOR ALL SYSTEMS.
  - PRIOR TO FINAL DESIGN AND INSTALLATION, CONTRACTOR SHALL PROVIDE A FIRE FLOW TEST AT SITE. FINAL DESIGN SHALL BE BASED ON FLOW/PRESSURE DATA DERIVED FROM THIS TEST. ANY CHANGES TO THE PRELIMINARY DESIGN MADE NECESSARY BY NEW DATA SHALL BE MADE AT NO ADDITIONAL COST. FIRE PROTECTION CONTRACTOR SHALL BE RESPONSIBLE FOR COSTS INCURRED WITH ANY AND ALL FLOW TESTS PERFORMED AS PART OF THIS CONTRACT.

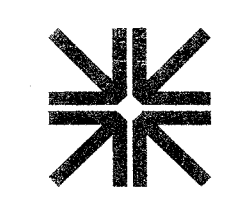


**A8** SECOND FLOOR FIRE SUPPRESSION PLAN

SCALE 1/8" = 1'-0"



**DESIGN WEST**  
ARCHITECTS, P.A.  
7513 KENNEWICK AVE SUITE D  
KENNEWICK, WA 98536  
PH: (509) 783-2244  
FAX: (509) 783-8740  
DESIGN CONCEPTS AND DRAWINGS NOT TO BE REPRODUCED OR TRANSMITTED IN ANY FORM OR BY ANY MEANS WITHOUT WRITTEN PERMISSION OF ARCHITECT



**HARGIS**  
Hargis Engineers, Inc.  
600 Stewart Street, Suite 1000 | Seattle, WA 98101  
(206) 448-3376 | (206) 448-4450 | hargis.biz  
ENGINEERS | MECHANICAL | ELECTRICAL | TELECOMMUNICATIONS

**KENNEWICK SCHOOL DISTRICT**  
**1315 BUILDING RENOVATIONS**  
1315 WEST 4TH AVENUE  
KENNEWICK, WA 98536

REVISIONS
DRAWN BY: MR
CHECKED BY: JR
DATE 1/10/2013
JOB NUMBER 278
SHEET NAME  <b>FIRE SUPPRESSION PLAN</b>
SHEET <b>M5.01</b>