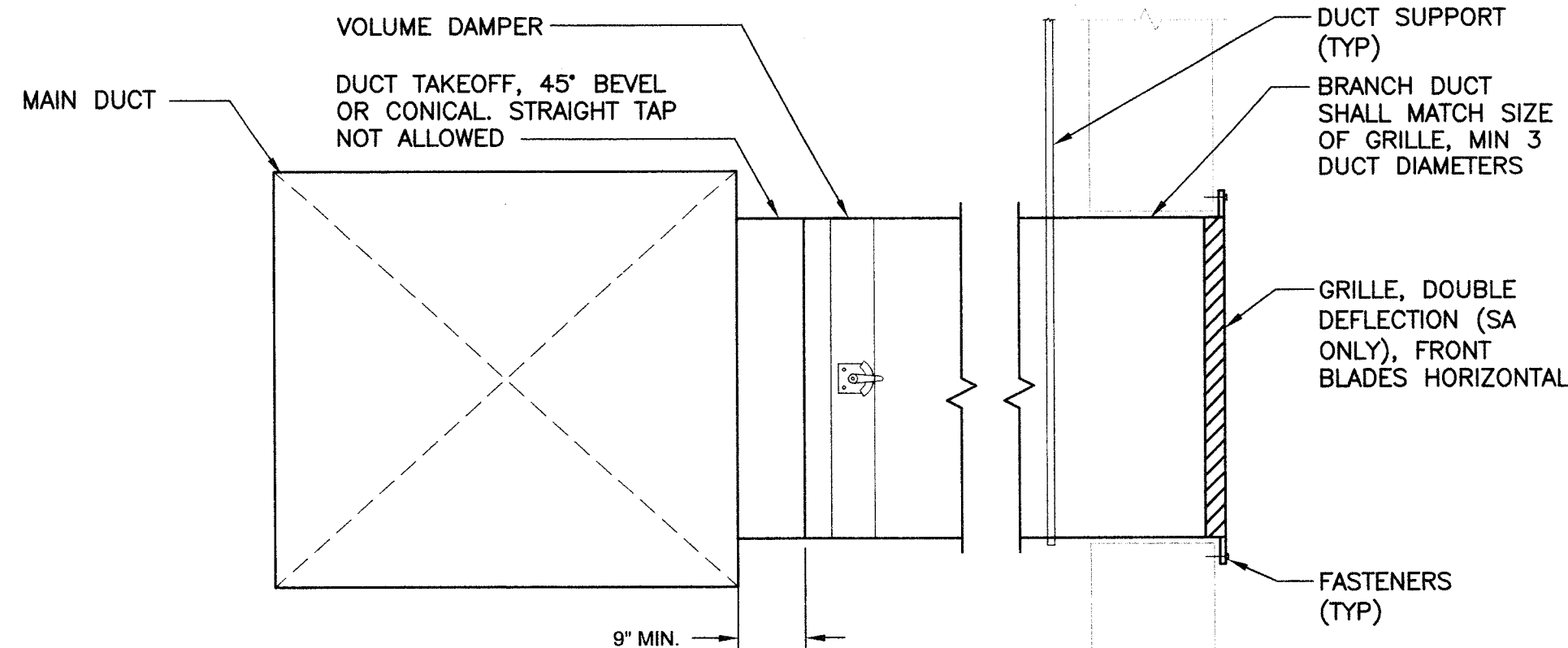
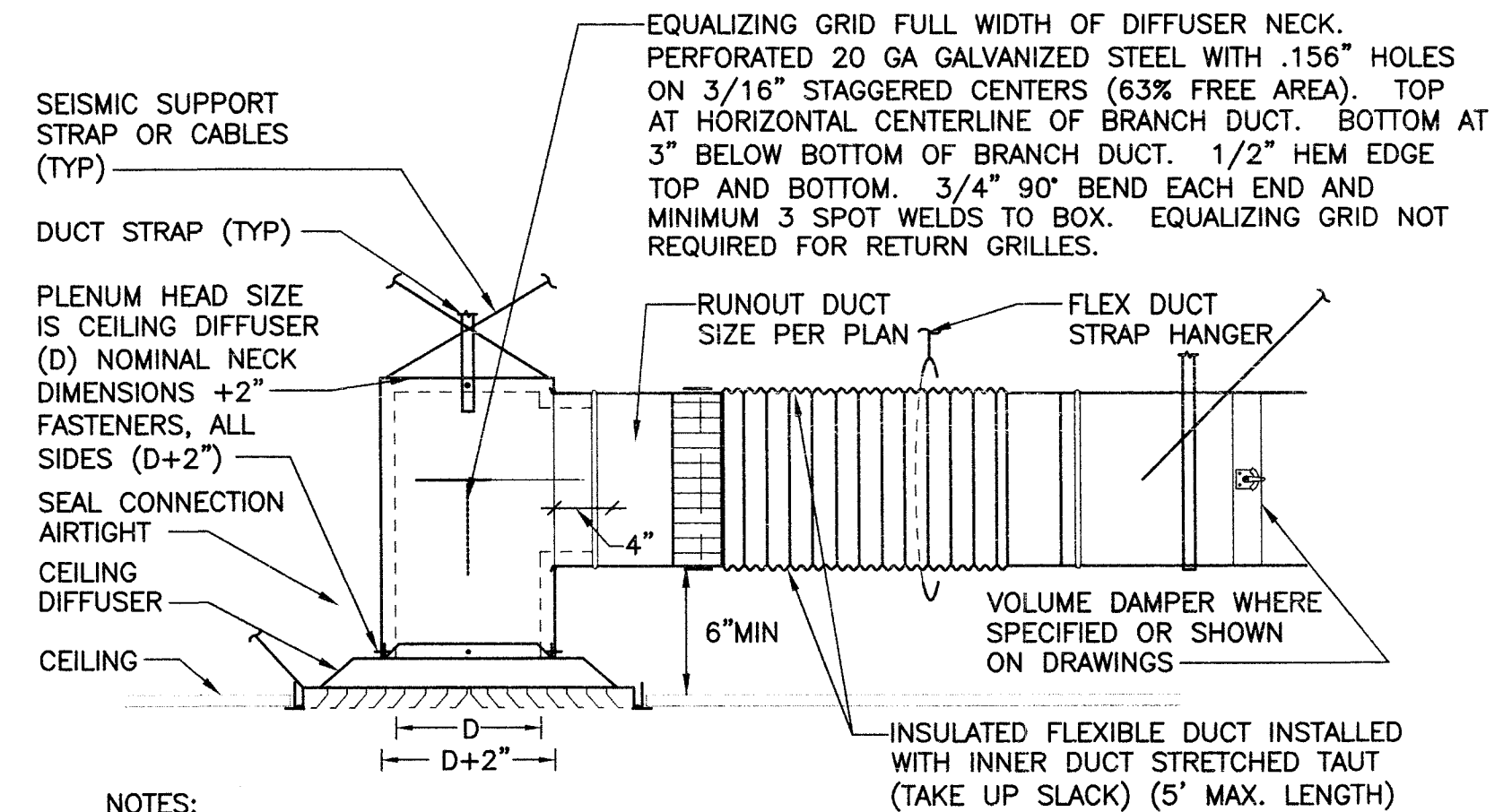


5 EXHAUST FAN INSTALLATION DETAIL
SCALE: NONE



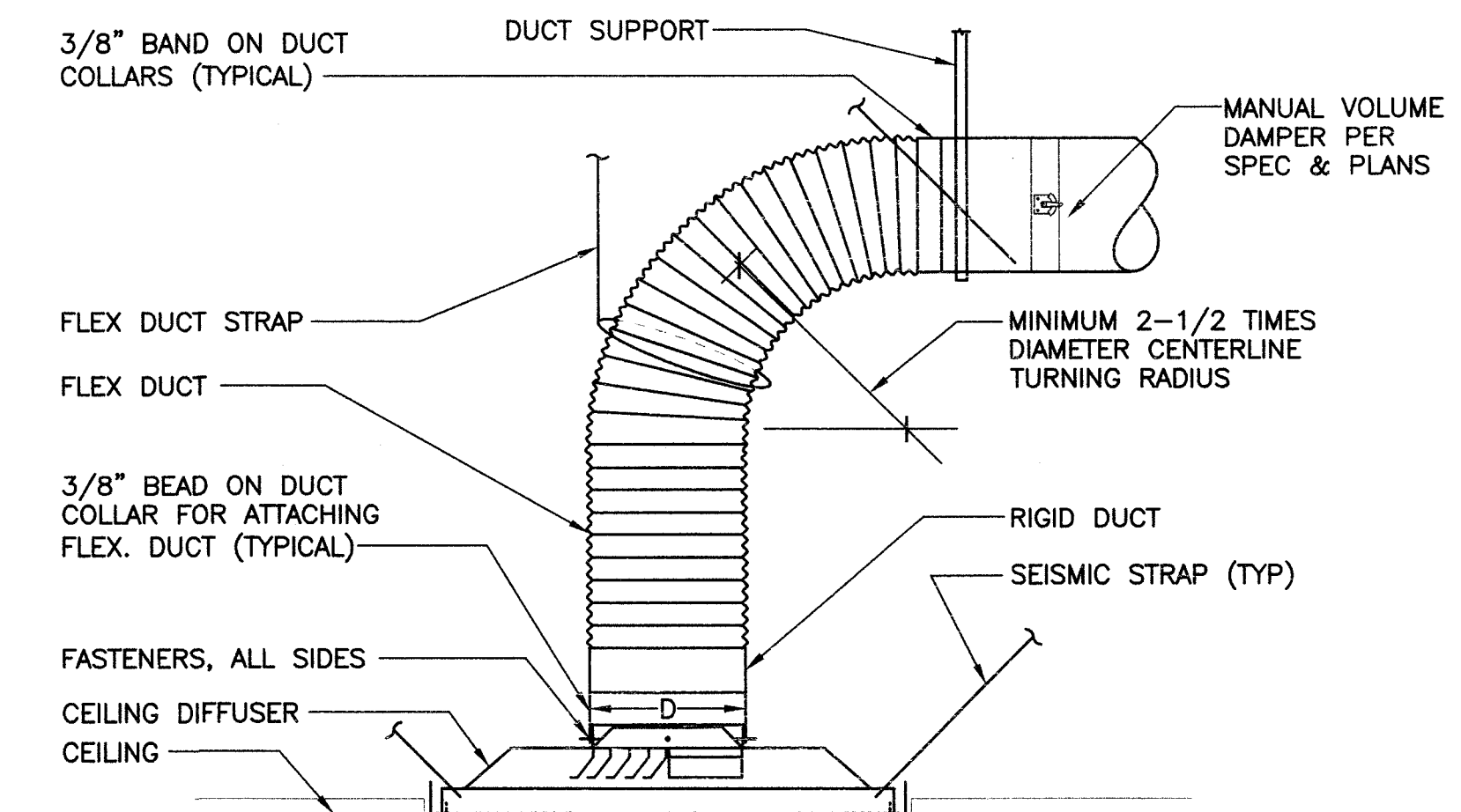
- NOTES:**
1. PROVIDE MINIMUM 5'-0" OF STRAIGHT DUCT FROM VOLUME DAMPER TO GRILLE FACE UNLESS NOTED OR INDICATED OTHERWISE ON DRAWINGS.
 2. MAIN DUCT HEIGHT SHALL BE 4" GREATER THAN BRANCH DUCT.
 3. DUCT INSULATION NOT SHOWN, PROVIDE PER SPECIFICATION.
 4. OPPOSED BLADE DAMPERS ARE NOT ALLOWED UNLESS OTHERWISE NOTED ON DRAWINGS.
 5. MOUNT GRILLE SUCH THAT GRILLE BLADES ARE PARALLEL TO THE FLOOR. WHERE GRILLE IS INSTALLED 6'-0" AFF GRILLE BLADES SHALL FACE TOWARD CEILING. BELOW 6'-0" GRILLE BLADES SHALL FACE TOWARD FLOOR.

4 DETAIL - SIDEWALL GRILLE CONNECTION
SCALE: NONE



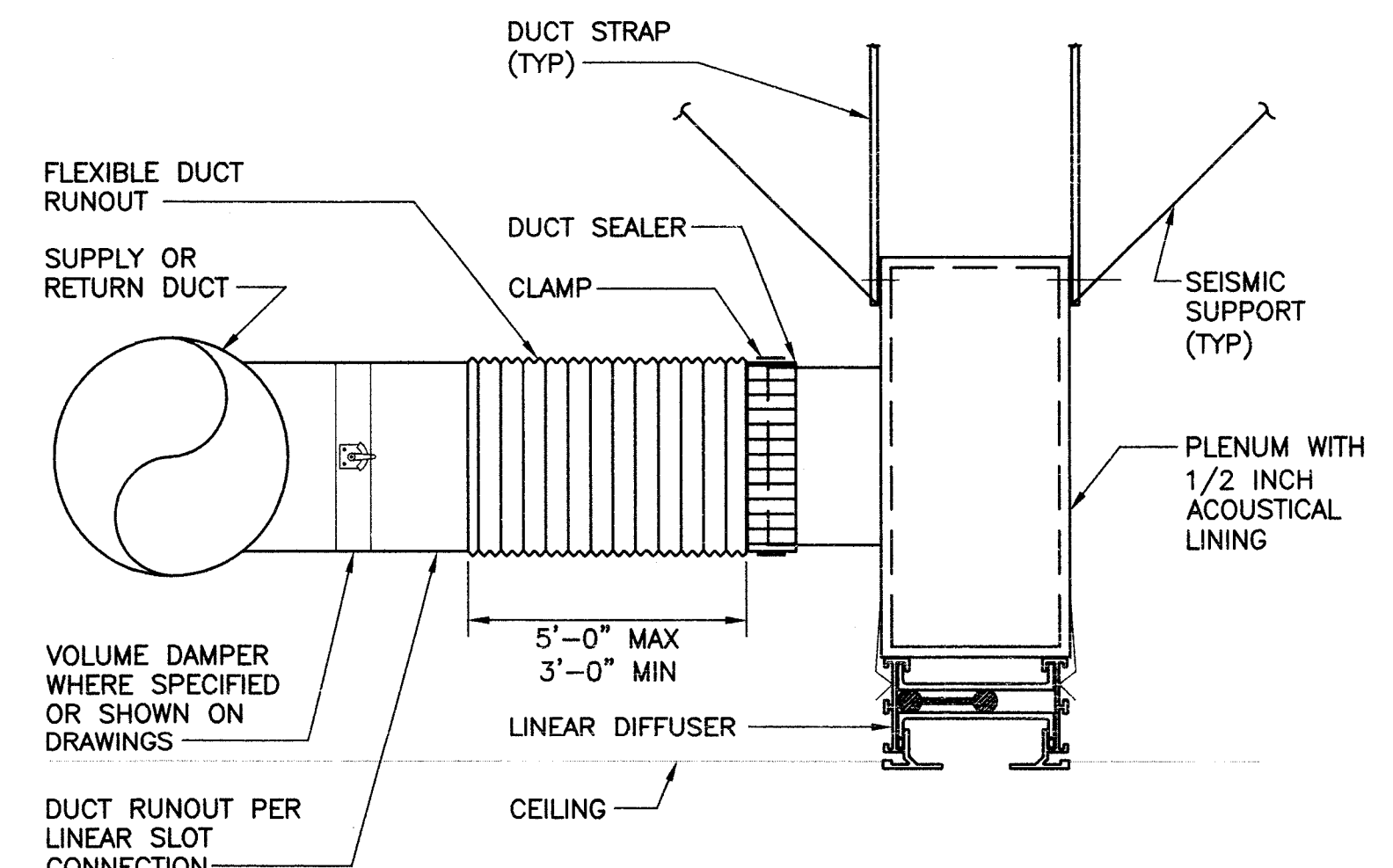
- NOTES:**
1. METHOD 1 IS PREFERRED METHOD FOR DIFFUSER AND GRILLE CONNECTION. AT CONTRACTOR'S OPTION, CONNECTION METHOD 2 MAY BE EMPLOYED.
 2. INSTALL PER MANUFACTURER'S REQUIREMENTS AND SMACNA RECOMMENDATIONS.
 3. FLEX DUCT SHALL BE LIMITED IN LENGTH PER SPEC.
 4. PLENUM BOX SHALL BE SAME SIZE WITH OR WITHOUT LINER. SEE SPEC FOR REQUIREMENTS.
 5. INCREASE CAN HEIGHT FOR PROPER CLEARANCES OF OTHER EQUIPMENT.
 6. PROVIDE SOUNDLINED DUCT WHERE SPECIFIED OR SHOWN ON DRAWINGS. WHERE SOUNDLINED DUCT IS NOT ALLOWED, PROVIDE FULL SIZE DUCT CONNECTION.

1 DETAIL - DIFFUSER/GRILLE CONNECTION OPTION 1
SCALE: NONE



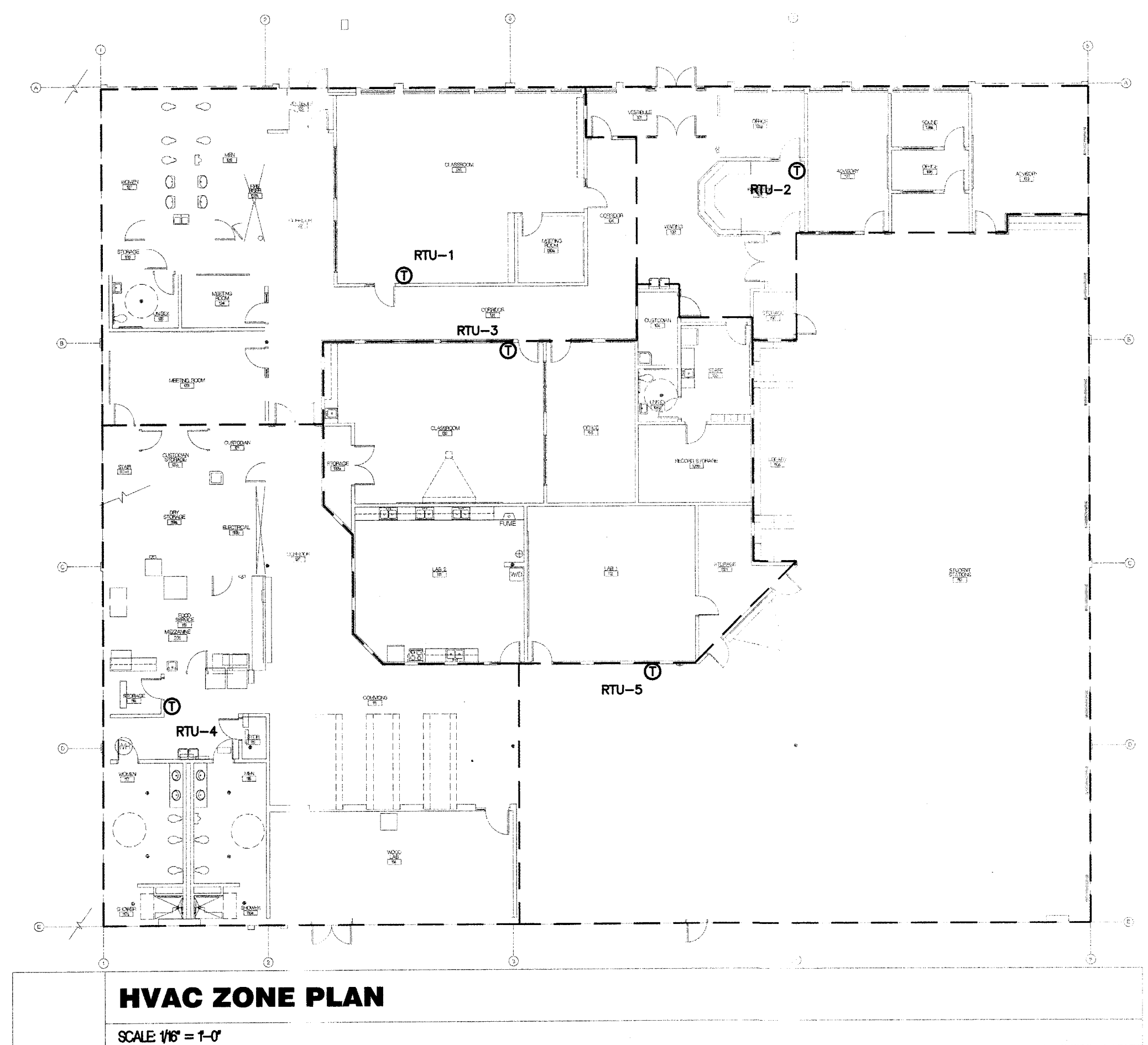
- NOTES:**
1. INSTALL PER MANUFACTURER'S REQUIREMENTS AND SMACNA RECOMMENDATIONS.
 2. FLEX DUCT SHALL BE INSTALLED SUCH THAT NO "KINKS" ARE IN DUCT. ANY FLEX DUCT WITH KINKS OBSERVED SHALL BE REMOVED AND REINSTALLED AT NO ADDITIONAL COST TO THE OWNER.

2 DETAIL - DIFFUSER/GRILLE CONNECTION OPTION 2
SCALE: NONE

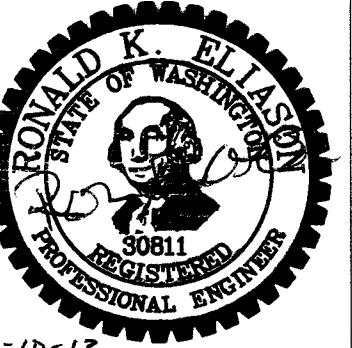


- NOTES:**
1. INSTALL PER MANUFACTURER'S REQUIREMENTS AND SMACNA RECOMMENDATIONS.
 2. PROVIDE SLOT/DIFFUSER AS SCHEDULE AT LOCATIONS SHOWN ON PLANS WITHOUT DUCT CONNECTIONS. PROVIDE 4" DEEP PLENUM PAINTED BLACK ON INTERIOR.

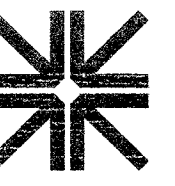
3 DETAIL - LINEAR SLOT/DIFFUSER CONNECTION
SCALE: NONE



HVAC ZONE PLAN
SCALE 1/8" = 1'-0"



DESIGN WEST
ARCHITECTS, P.A.
7513 W KENNEWICK AVE SUITE D
KENNEWICK, WA 98032
PH: (509) 785-2244
FAX: (509) 785-2244
WWW.DESIGNWESTARCHITECTS.COM
DESIGN CONCEPTS AND DRAWINGS NOT TO BE REUSED
WITHOUT WRITTEN PERMISSION OF ARCHITECT



HARGIS
Hargis Engineers, Inc.
800 Stewart Street, Suite 1000 | Seattle, WA 98101
1 | 206.448.3376 f | 206.448.4450 w | hargis.biz
ENGINEERS | MECHANICAL | ELECTRICAL | TELECOMMUNICATIONS

**KENNEWICK SCHOOL DISTRICT
1315 BUILDING RENOVATIONS**
1315 WEST 4TH AVENUE
KENNEWICK, WA 98336

REVISIONS

DRAWN BY:
MR

CHECKED BY:
JR

DATE
1/10/2018

JOB NUMBER
278

SHEET NAME

**MECHANICAL
DETAILS AND
ZONE PLAN**

SHEET

M9.03