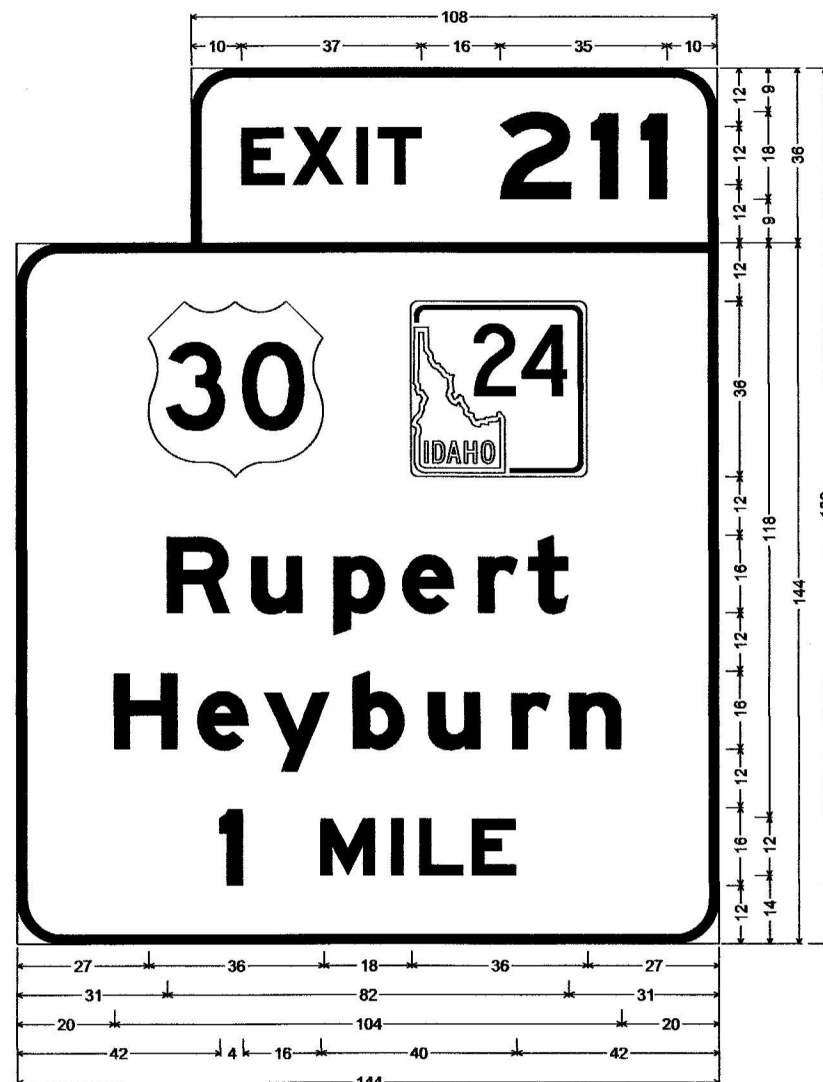
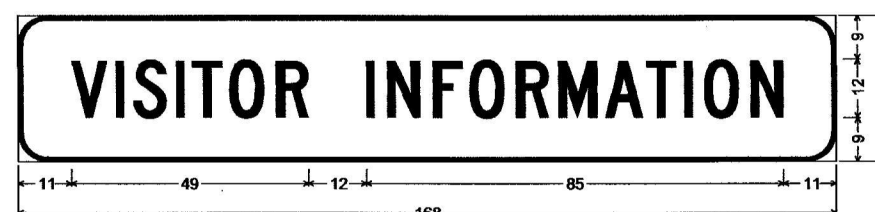


17
I-84
MP 209.65 EB
E1-5
E1-1
I-51A
D9-5
D9-2A



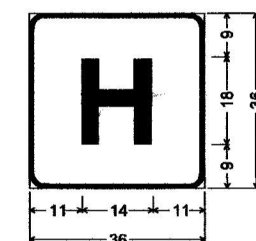
E1-5_VARx36; 9" Radius, 2" Border, White on Green;
[EXIT] E Mod 2K; [211] E Mod 2K;
E1-1_VARxVAR_ROUTE SPLIT w-RIGHT LANE;
9" Radius, 2" Border, White on Green;
State Highway 24 M1-8; [Rupert] E Mod 2K; [Heyburn] E Mod 2K;
[1 MILE] E Mod 2K;
Table of widths and spaces.

E	X	I	T	2	1	1	10
46	9	2	10	3	2	3	8
27	36	18	36	27			
R	u	p	e	r	t		
31	13	4	11	6	11	3	8
H	e	y	b	u	r	n	
20	13	4	11	3	13	5	10
1	M	1	L	E			
42	4	16	12	3	2	4	9



I-51A_168X24VISITOR INFO; 6" Radius, 1" Border, White on Blue;
[VISITOR INFORMATION] C 2K;
Table of widths and spaces.

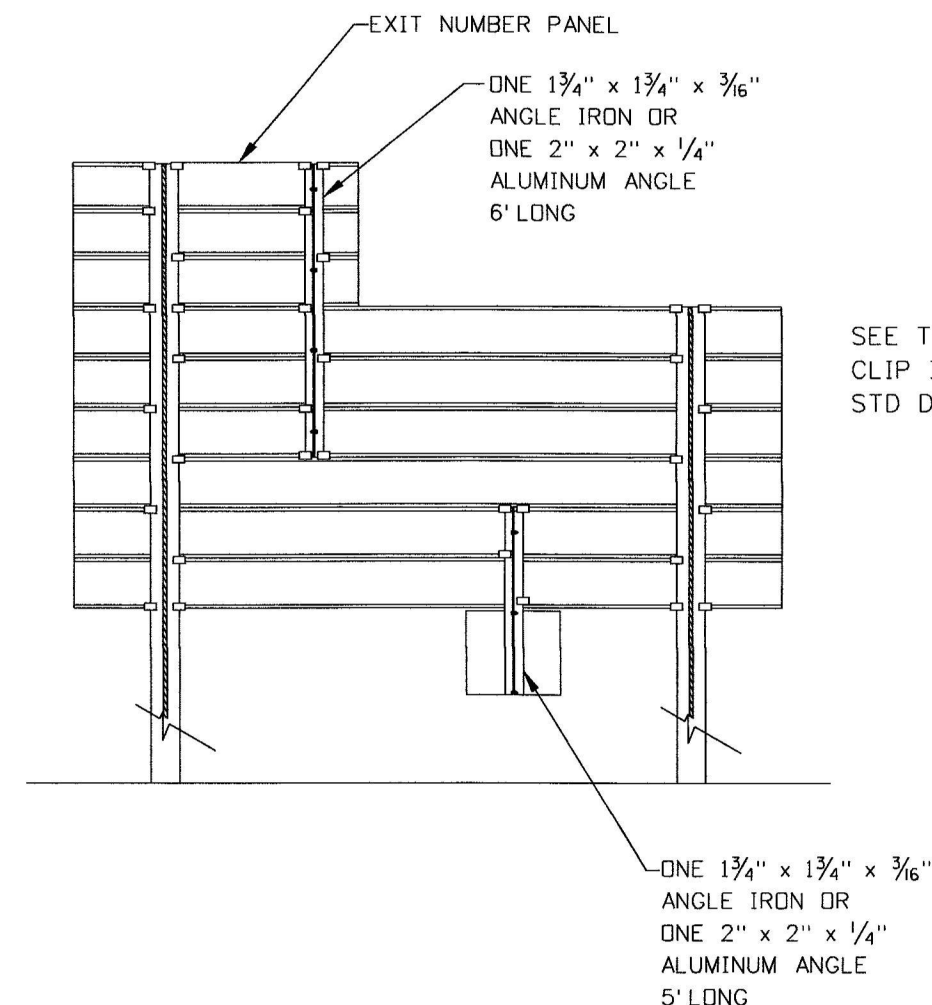
V	I	S	I	T	O	R
11	7	2	2	2	6	1
I	N	F	O	R	M	A
12	1	3	7	2	7	2



D9-2;
3" Radius, 1" Border, White on Blue;
[H] E Mod 2K;
Table of widths and spaces.

H
11

TYPE B SIGN
ATTACHMENT DETAIL
N.T.S.



SEE TYPICAL
CLIP INSTALLATION
STD DWG I-10-B

REVISIONS			
NO.	DATE	BY	DESCRIPTION

DESIGNED K. OLSON
DESIGN CHECKED B. CHRISTENSEN
DETAILED K. OLSON
DRAWING CHECKED B. CHRISTENSEN

SCALES SHOWN ARE FOR 11" X 17" PRINTS ONLY
CADD FILE NAME 11619_pl_006.dgn
DRAWING DATE: SEPTEMBER 2012

IDAHO TRANSPORTATION DEPARTMENT
DISTRICT 4 DESIGN - SHOSHONE

PROJECT NO. A011(069)

SIGN DETAIL SHEET FY13 D4 SIGN UPGRADES
--

English
COUNTY VARIOUS
KEY NUMBER 11619
SHEET 13 OF 17

