

NO.12 AWG THWN
TO SIGN LUMINAIRES

LOWER STRUCTURE CHORD

5'-6"
MOUNTING
HEIGHT

TYPICAL OVERHEAD SIGN STRUCTURE WITH TRANSFORMER DETAIL

'C' HOOK CABLE SUPPORT

4 1/2" X 6" HANDHOLE
WITH COVER

STANDARD SPLIT ROD SINGLE OFFSET
EYE WIRE MESH CABLE SUPPORT
REQUIRED

480V TO 120V-277V
TRANSFORMER WITH
NEMA 3R HOUSING

DRILL AND TAP FOR 3/8" BOLT WITH
WASHER TO SECURE CABINET TO
POLE

1" HUB WITH INSULATING BUSHING
AND SEALED WITH SILICONE

DRILL AND TAP FOR 3/8" BOLT WITH
WASHER TO SECURE CABINET TO
POLE

POLE GAIN

DISCONNECT CABINET WITH 60 AMP, 2P
NON-AUTOMATIC CIRCUIT BREAKER

1" HUB WITH INSULATING BUSHING
AND SEALED WITH SILICONE

IN LINE TYPE FUSED WIRE
CONNECTORS

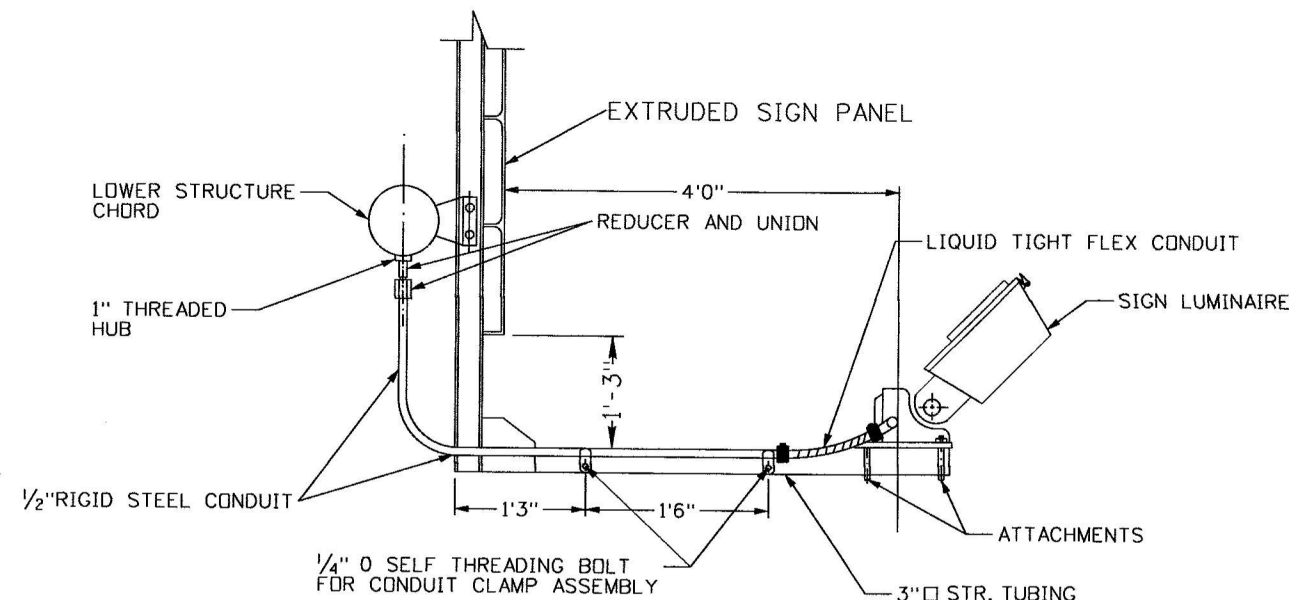
GROUND LUG

4 1/2" X 6" REINFORCED
HANDHOLE WITH COVER

BASE PLATE

WATERPROOF SPLICE
KITS REQ'D

2" PC CONDUIT



TYPICAL SIGN STRUCTURE LUMINAIRE CONDUIT ATTACHMENT DETAIL

NOTE:

WIRE - NO.12 AWG THWN STRANDED
COPPER REQUIRED FROM DISCONNECT
CABINET TO LUMINAIRES.

SPLICE CONNECTIONS PERMITTED
IN STR. MEMBER AT HANDHOLES ONLY.

REVISIONS

NO.	DATE	BY	DESCRIPTION

DESIGNED	K. OLSON
DESIGN CHECKED	B. CHRISTENSEN
DETAILED	K. OLSON
DRAWING CHECKED	B. CHRISTENSEN

SCALES SHOWN ARE FOR 11" X 17" PRINTS ONLY
CADD FILE NAME
DRAWING DATE: SEPTEMBER 2012

IDAHO TRANSPORTATION DEPARTMENT
DISTRICT 4 DESIGN - SHOSHONE

PROJECT NO.
A011(619)

SIGN LIGHTER DETAIL
FY13 D4 SIGN UPGRADES

English
COUNTY
VARIOUS
KEY NUMBER
11619
SHEET 15 OF 17

