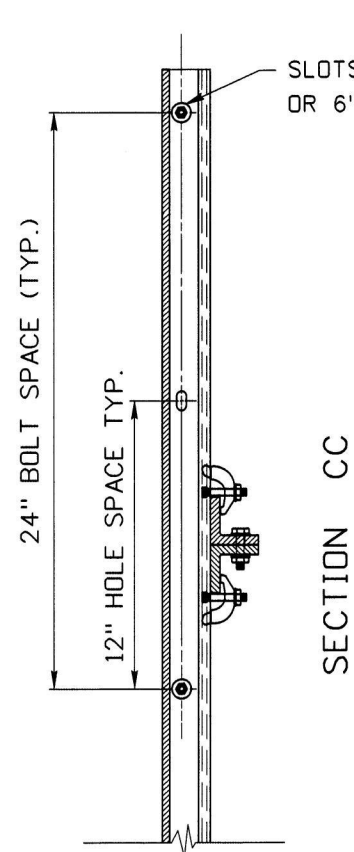
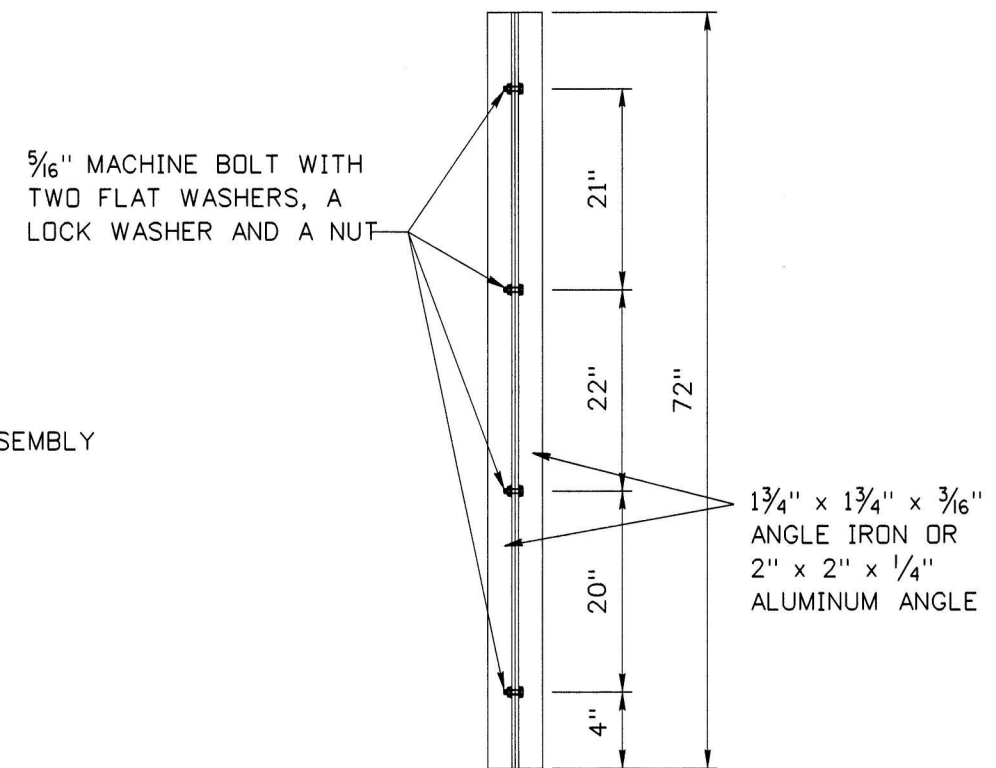
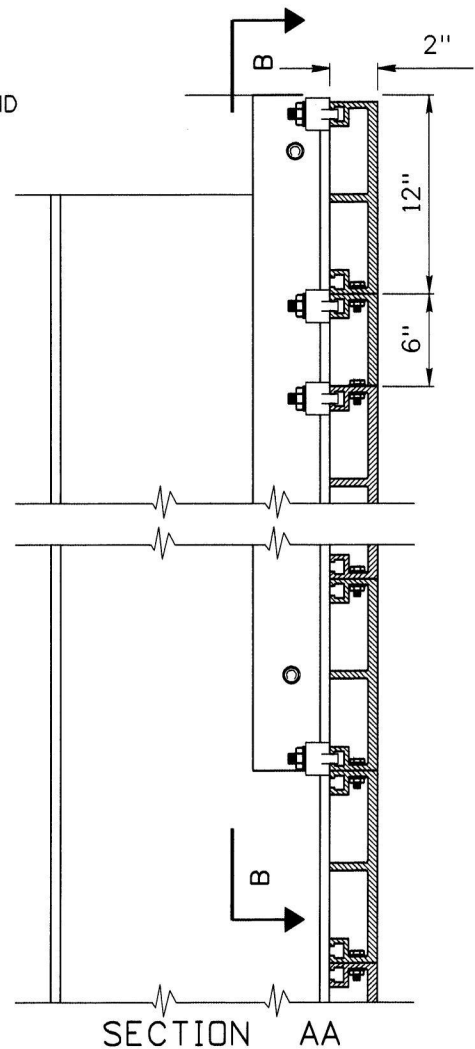


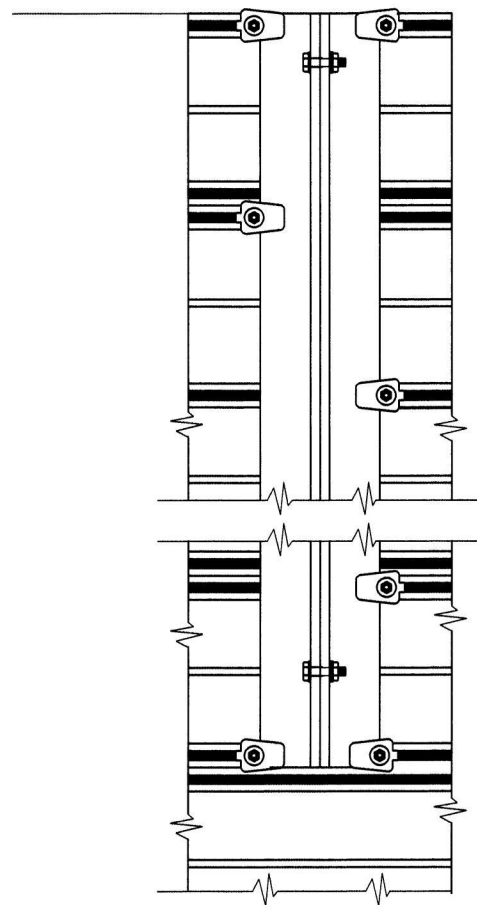
TYPICAL CLIP INSTALLATION FOR EXTRUDED ALUMINUM PANELS



SECTION CC



SECTION AA



SECTION BB

NOTES:

1. SEE STANDARD DRAWING I-10-A FOR INSTALLATION DETAILS.
2. $1\frac{3}{4}" \times 1\frac{3}{4}" \times \frac{3}{16}"$ ANGLE IRON WEIGHS 2.12 LBS/FT.
WEIGHT OF ANGLE IRON DOES NOT INCLUDE GALVANIZING.
3. $2" \times 2" \times \frac{1}{4}"$ ALUMINUM ANGLE WEIGHS 1.11 LBS/FT.

REVISIONS							
NO.	DATE	BY	NO.	DATE	BY	NO.	DATE
1	12-01	NQB					
2	01-04	HEB					
3	12-07	HEB					

SCALES SHOWN
ARE FOR 11" X 17"
PRINTS ONLY

CADD FILE NAME:
i10b1207.std

DRAWING DATE:
April, 1992

IDAHO
TRANSPORTATION
DEPARTMENT



BOISE IDAHO

W. Thomas
ASSISTANT CHIEF ENGINEER (DEVELOPMENT)

Steven C. Hutchinson
CHIEF ENGINEER

STANDARD DRAWING

EXIT NUMBER
PANELS

REQUIRES STD. DWG. I-10-A

English

STANDARD DRAWING NO.

I-10-B

SHEET 1 OF 1

